

Keysight Technologies

M9380A PXIe CW Source

Accurate and High-Powered

Industries and Applications

- Aerospace and defense
- Interference injection
- LO substitution
- Wireless component test

Product Description

The Keysight Technologies, Inc. M9380A PXIe CW source is a compact modular solution that provides frequency coverage from 1 MHz to 3.0 GHz or 6.0 GHz. A typical M9380A configuration includes three individual PXIe modules—the M9310A source output, M9301A synthesizer and M9300A frequency reference—designed for fast data interfaces and high-speed automated test systems. Instrument control is provided through a soft front panel and programmatic interfaces tuned to your application development environment of choice.



Main Features and Benefits

Product features	Your benefit
License-key based upgrades without returning modules	Purchase what you need today and easily upgrade later
One-step software install and integrated soft front panel	Reduce startup time
Multiple programmatic interfaces	Easy integration into test environments and reduced development time
Calibrated Core Exchange Strategy	Fast repair and turnaround time

Specifications and Characteristics

Hardware	
Frequency range	1 MHz to 3.0 GHz or 6.0 GHz
Output power	18 dBm across the frequency range 19 dBm from 1 MHz to 5 GHz
Phase noise	< -122 dBc/Hz (1 GHz, 20 kHz offset)
Amplitude Accuracy	± 0.4 to 1 dB
Size	3-slot

Chassis slot compatibility: PXIe, PXIe Hybrid

Software Information

The M9380A PXIe CW source includes instrument drivers, documentation, examples, and software tools to help you quickly develop test systems in your application development environment of choice.

Operating systems	Microsoft Windows XP (32-bit) Microsoft Windows Vista SP1 and SP2 (32/64-bit) Microsoft Windows 7 (32/64-bit)
Standard compliant drivers	IVI-COM, IVI-C, LabVIEW, MATLAB
Application Development Environments (ADE)	VisualStudio (C/C++, C#, VB.NET), LabVIEW, LabWindows/CVI, MATLAB, VEE
Keysight IO Libraries (version version 16.3.16603.3 or newer)	Includes: VISA Libraries, Keysight Connection Expert, IO Monitor
Keysight Command Expert	Instrument control for SCPI or IVI-COM drivers

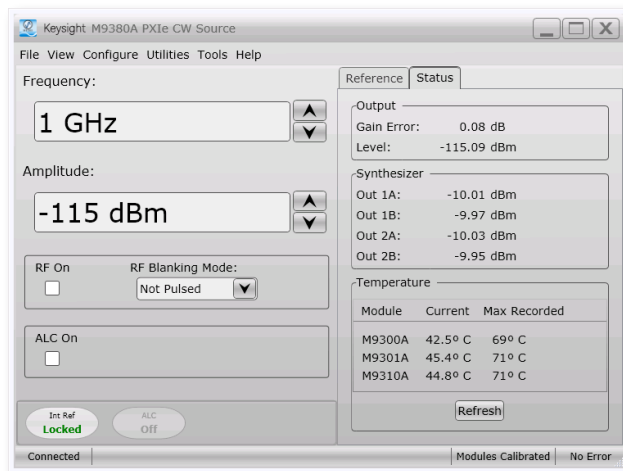


Figure 1. Keysight M9380A CW source soft front panel.

www.keysight.com/find/modular
www.keysight.com/find/m9380a
 USA: (800) 829-4444

Ordering Information

Model	Description
M9380A	PXIe CW source: 1 MHz to 3 or 6 GHz Includes: M9301A PXIe synthesizer M9310A PXIe source output One day startup assistance Module interconnect cables Software, example programs and product information on CD

Base Configuration	
M9380A-F03	Frequency range: 1 MHz to 3 GHz
M9380A-300	PXIe frequency reference: Required for 10 MHz and 100 MHz warranted
M9380A-300 specifications	Adds M9300A PXIe frequency reference: 10 MHz and 100 MHz (M9300A module can support multiple M9380A modular instruments)

Configurable Options

Frequency	
M9380A-F03	Frequency range: 1 MHz to 3 GHz
✓ M9380A-F06	Frequency range: 1 MHz to 6 GHz

Power	
✓ M9380A-1EA	High output power

Related Products in Recommended Configuration	
✓ M9036A	PXIe embedded controller
✓ M9018A	18-Slot PXIe chassis

✓ *Recommended configuration*

Advantage Services: Calibration

Keysight Advantage Services is committed to your success throughout your equipment's lifetime.

M9380A-UK6	Commercial calibration certificate with test data for M9380A (M9301A, M9310A)
M9300A-UK6	Commercial calibration certificate with test data for M9300A (module only)

KEYSIGHT SERVICES

Accelerate Technology Adoption. *Lower costs.*

www.keysight.com/find/services

Keysight Services helps you improve productivity and product quality with our comprehensive service offerings of one-stop calibration, repair, asset management, technology refresh, consulting, training, and more.

This information is subject to change without notice.
 © Keysight Technologies 2017
 Printed in USA, December 2, 2017
 5991-0284EN
www.keysight.com