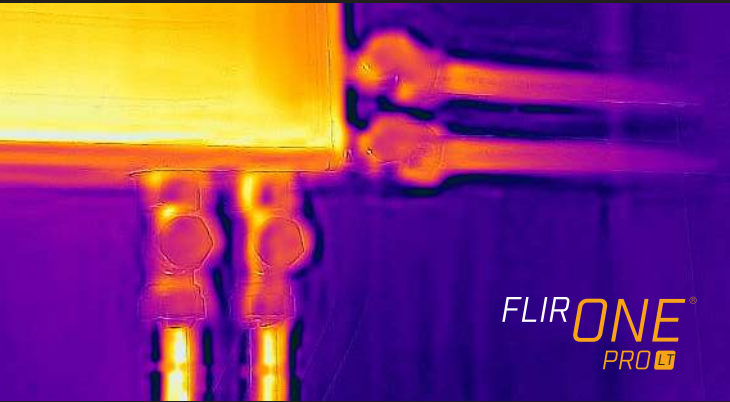


## SEE THE DIFFERENCE!

Choose the right model that best fits your application.

Need a higher resolution, or temperature range, then FLIR ONE Pro is the right choice for you.



### Specifications by product

|                             | FLIR ONE Pro LT                | FLIR ONE Pro   |
|-----------------------------|--------------------------------|--|
| Thermal pixel size          | 17 $\mu\text{m}$               | 12 $\mu\text{m}$   |
| Thermal resolution          | 4,800 pixels (80 $\times$ 60)  | 19,200 pixels (160 $\times$ 120)                               |
| Thermal sensitivity         | 100 mK                         | 70 mK  |
| Object temperature range(s) | -20°C to 120°C (-4°F to 248°F) | -20° to 120°C (-4°F to 248°F)<br>0°C to 400°C ( 32°F to 752°F) |
| HFOV / VFOV                 | 50° / 38°                      | 55° / 43°  |

### Common specifications

|                                |   |
|--------------------------------|---|
| Size (w $\times$ h $\times$ d) | 68 $\times$ 34 $\times$ 14 mm (2.7 $\times$ 1.3 $\times$ 0.6 in)  |
| Measurement accuracy           | $\pm 3^\circ\text{C}$ (5.4°F) or $\pm 5\%$ , typical percent of the difference between ambient and scene temperature. Applicable 60 sec after start-up when the unit is within 15°C to 35°C (59°F to 95°F) and the scene is within 5°C to 120°C (41°F to 248°F) |
| Spectral range                 | 8 – 14 $\mu\text{m}$  |
| Visual resolution              | 1440 $\times$ 1080  |
| Frame rate                     | 8.7 Hz  |
| Focus                          | Fixed: 15 cm – infinity   |
| Adjustable MSX distance        | 0.3 m – infinity  |
| Image presentation modes       | Infrared, visual, MSX   |
| VividIR                        | Yes   |
| Palettes                       | Gray (white hot), Hottest, Coldest, Iron, Contrast, Arctic, Lava, and Color Wheel   |
| Video and image capture        | Video and photo, saved as 1440 $\times$ 1080  |
| File formats                   | Radiometric JPG, MPEG-4 (file format MOV for iOS, MP4 for Android)  |
| Spot measurement               | Hottest, Coldest, and 3 spot measurement  |
| Drop tested                    | Drop from 1.8 m (5.9 ft)  |

For the most up-to-date specifications please visit [www.flir.com/flironepro](http://www.flir.com/flironepro)

WILSONVILLE  
27700 SW Parkway Ave.  
Wilsonville, OR 97070  
USA  
PH: +1 877.773.3547

HONG KONG  
Room 1613-15, Tower 2  
Grand Central Plaza  
138 Shatin Rural Committee Rd  
Shatin, N.T.  
PH: +852 27 92 89 55

LATIN AMERICA  
Av. Antonio Bardella, 320  
Sorocaba, SP 18085-852  
Brasil  
PH: +55 15 3238 8070

EUROPE  
Luxemburgstraat 2  
2321 Meer  
Belgium  
PH: +32 2 896 29 05

21-0571-INS-A4

[www.teledyneflir.com](http://www.teledyneflir.com)



## FLIR ONE® PRO-SERIES

For iOS® and Android™

Which model is right for you?



See the Heat.  
Solve the Problem.

# THE PROFESSIONAL-GRADE THERMAL CAMERA FOR PROFESSIONALS WORKING ON-THE-GO!

FLIR ONE Pro-Series cameras give you the power to find problems quickly and ensure you repaired them correctly.

Features such as spot measurement tools, adjustable temperature controls, and a range of color palettes can help you pinpoint the temperature differences that could indicate trouble. Both Pro-Series cameras offer VividIR™ which renders clearer and sharper images, and MSX® which improves perspective by overlaying visual details onto your thermal image. The FLIR OneFit™ adjustable connector extends up to 4 mm to fit many popular protective phone cases.

Whether you're an electrician, mechanical inspector, automotive technician, or HVAC professional, FLIR ONE Pro-Series cameras enable users of all experience levels to work efficiently while on-the-go.



Coldest spot



Hottest spot

To start getting the most out of your FLIR ONE Pro, download the FLIR One App from the App Store (for iOS) or Google Play Store (for Android).

This easy-to-use app is packed with professional thermal editing features and gives you the ability to quickly share images with your team members. Users also have convenient access to a wide variety of compatible FLIR ONE mobile apps (developed using FLIR mobile SDK).



OneFit connector allows use with many protective cases

Visual camera overlays visual details onto your thermal image for MSX enhancement

Thermal camera provides a wide horizontal and vertical field of view

Captures JPEGs, video files

## FLIR ONE<sup>®</sup> PRO LT

- Most affordable model of the FLIR ONE Pro-Series
- Thermal image resolution of 4,800 pixels
- Temperature measurements up to 120°C (248°F)
- The thermal sensitivity needed to detect temperature differences down to 100 mK

## FLIR ONE<sup>®</sup> PRO

- The highest thermal image resolution at 19,200 pixels—a 4x improvement over the Pro LT
- Maximum temperature measurements that are 3x higher than the Pro LT—up to 400°C (752°F)
- The thermal sensitivity needed to detect temperature differences down to 70 mK